

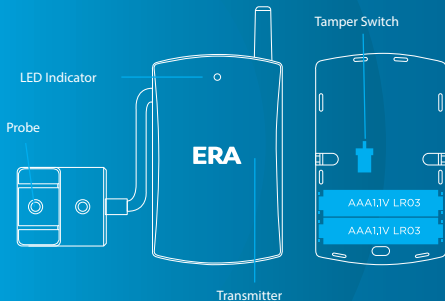
Water Sensor

Model: WI-210

1. INTRODUCTION

This is a wireless water sensor, which works based on the theory of liquid conductivity. The performance is reliable and the installation is easy. When the liquid reaches the two probes of the detector, it will send a wireless signal to the control panel. It can be widely used in kitchen, bathrooms, basements or any places in need of protection from water. The water sensor comes with 2 x AAA batteries giving up to 12 months of use before the need to replace.

2. GET TO KNOW YOUR PRODUCT



LED Indication

Flash once: Liquid is detected, sending wireless signal to the control panel.

Flash once every 3 seconds: Low battery, please replace the batteries immediately.

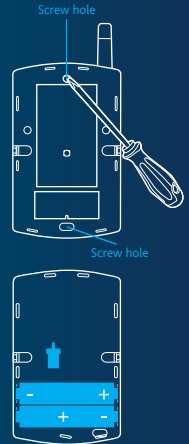
Connect to the Control Panel

Make sure that the control panel has 'learning status' active, then simulate an alarm case by touching the probe of the water sensor to water. When the signal is received and one beep is heard, they are connected successfully.

NOTE: Please dry the probe after pairing the device to the control panel.

3. INSTALLATION

1. Remove the insulated strip, the detector will enter working mode
2. Using the screws provided, fix the probe horizontally in the area that is required to be detected.
3. Use double-sided adhesive tape or screws provided to fix the transmitter in the place where the liquid is unable to reach and keep the antenna pointing upwards.



Change Batteries

Take off the back case with a screwdriver, replace the batteries with new ones according to the positive and negative marks.

NOTE: The control panel will be required to be in test mode before you can change the batteries on the sensor.

4. SPECIFICATION

Power Supply	DC 3V (AAA 1.5V LR03 x 2 Pcs)
Static Current:	< 29uA
Alarm Current:	< 22.2mA
Transmitting distance:	<80m (in open area)
Radio Frequency:	433 MHz (75±KHz)
Housing Material:	ABS Plastic
Operations Condition:	Temperature: 0°C ~ +55°C Relative Humidity: <80% (non-condensing)
Detector Dimensions	54 x 14.5 x 107mm (L x W x H)
Probe Dimensions	35 x 30 x 15mm (L x W x H)